

POWERED BY
SAP NetWeaver™



ERPxPDM 1.0

Process integration of PLM systems into SAP system landscape

The challenge

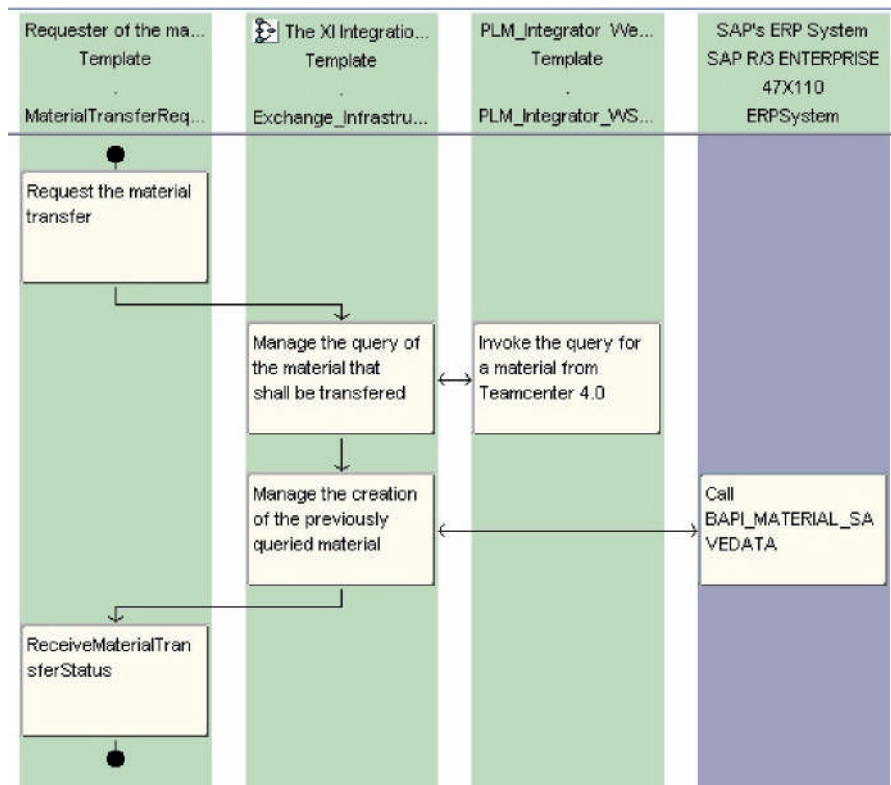
Getting PLM solutions with all their valuable technical in-depth knowledge accessible for the whole enterprise during the complete product lifecycle seems to be a great idea. However, there is a strong need for state-of-the-art integrations to really manage this information flow within master process chains of a company to support daily work efficiently. Previous point-to-point integrations to local ERP systems, based on procedural data interfaces, do not fulfill these challenging requirements. Instead a demand-driven universal integration of typical P L M objects and services defined in the engineering labs is needed to enhance business processes of the whole enterprise.

When the underlying process logic (which controls system spanning information exchange), lies outside of the involved applications, the whole Enterprise Service Architecture pushes up to a higher flexibility needed for quick response to ever changing conditions and business rules.

The solution

The future oriented integration platform SAP NetWeaver™ is available for every SAP customer as a basic technology for the Exchange Infrastructure (XI). This on top component allows a seamless integration of PDM/PLM functions and objects with those of other important business applications inside and outside a company with the target to improve the support of established business processes significantly.

Within the so called XI content the participating business systems are brought into contact by the defined process steps (actions) and their messages (services) using the suitable XI adapters (interfaces).



Furthermore, the embedded Business Process Management (BPM) allows us to define rule-based assignments, routing, and actions using the graphical tools it sets up.

SOFTWARE™
SAP
PARTNER



Certified solutions for daily
business



The pre-configured XI content ERPxDPM 1.0 covers all time information flow, which is typical within discrete manufacturing industry for their communication needs between PDM/PLM systems and mySAP ERP or R/3 applications. Within a few minutes first sample processes can be set up by simply importing the scenario into the Integration Builder of XI. This import enables already a first testing of basic data flow between the involved applications and provides a perfect starting basis to refine and extend the given process templates for productive use in respect to customer defined business processes:

- All needed steps for each exchange process are already predefined.
- The processes are built up in a modular way to allow consistent modifications.
- Additional process steps and rules can be easily applied using graphical editors.
- All important mappings between PLM and SAP objects are already set up.
- Further mappings can be easily configured with the help of graphical tools.
- The system adapters are pre-assigned for all services using interface mappings.

The following exchange processes are already covered by ERPxDPM 1.0:

- Complete creation and update of material master incl. feedback of selected data
- Creation and update of single/multilevel BUM incl. bidirectional validity data
- Creation and update of document info record with relations and optional files
- Integrated Engineering Change Management with bidirectional data flow
- Message transfer into system specific inboxes of end users (notifications)

The successful certification "Powered by SAP NetWeaver" of ERPxDPM 1.0 proves the fully SAP compliant configuration of this XI content and its readiness for the integration platform of SAP NetWeaver™. In addition SebringSoft offers certified XI adapters for most of the available PDM/PLM systems at the market (WindChill, MatrixOne, Oracle/Agile, UGS TeamCenter Adapters). They can be obtained following the product name PLM Integrator 2.0.

Both partner solutions help to save already made investments on existing PDM/PLM applications by a significant increase of flexibility and effectiveness within IT infrastructure thus supporting companies at their permanent effort to adapt to ever changing market situations.

SebringSoft – Your partner

SebringSoft is your project partner for integration solutions over the entire enterprise value chain. Our staffs are distinguished by extensive experience in international projects, know-how in the organization and improvement of business processes, in data modeling and system integration as well as extensive application knowledge.



Sebring Software, LLC

1400 Cattlemen Road
Sarasota, FL 34232

United States

Tel. 941-377-0715

Fax 941-377-0719

E-Mail lwa@sebringsoft.com
<http://www.sebringsoft.com>

©Sebring Software, LLC - Information in this document may not be copied, reproduced, or otherwise altered without the express written permission of SebringSoft. All rights reserved.